



# Heat recovery unit

# MHISAF



## Description

The MHISAF recovers heat energy which would otherwise be exhausted to atmosphere, and uses this energy to warm the air entering the building. The reverse happens in warmer climates, where the exhausted cool air is used to partially cool the incoming air.

Capturing this waste energy means the heating/ cooling requirements of the building are reduced, so smaller size plant can be selected, savings can be made in long term energy consumption, and carbon emissions are reduced.

## Features

Remote control

- On/Off Timer- the hour and minute of timer on/off can be set
- Filter Sign- announces the due time for cleaning the air filter



Switch box option



## Technical Data

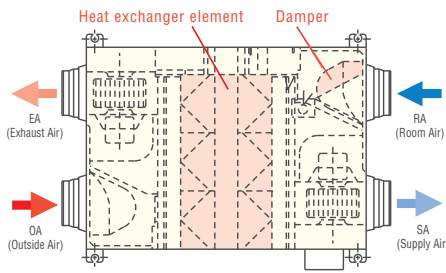
Item	Model	MHISAF150E7	MHISAF250E7	MHISAF350E7	MHISAF500E7	MHISAF800E7	MHISAF1000E7		
Power source		1 Phase 220-240V, 50Hz							
Exterior dimensions Height x Width x Depth	mm	270x970x467	270x882x599	317x1050x804	317x1090x904	388x1322x884	388x1322x1134		
Exterior appearance		Galvanised steel sheet							
Power input	W	92-107	108-123	178-185	204-225	360-378	416-432		
Running current	A	0.42-0.45	0.49-0.51	0.81-0.77	0.93-0.94	1.64-1.58	1.89-1.80		
Capacity	UHi	Enthalpy exchange efficiency	Cooling	63	63	66	62	65	65
		Heating	70	70	69	67	71	71	
	Hi	Temperature exchange efficiency	75						
		Enthalpy exchange efficiency	Cooling	63	63	66	62	65	65
		Heating	70	70	69	67	71	71	
	Lo	Temperature exchange efficiency	75						
		Enthalpy exchange efficiency	Cooling	66	65	71	64	68	70
		Heating	73	72	73	69	74	76	
	Temperature exchange efficiency	77	77	78	76	76	79		
Motor & Q'ty	W	10 x 2	20 x 2	40 x 2	70 x 2	180 x 2	180 x 2		
Air handling equipment Fan type & Q'ty		Sirocco fan x 2							
Air flow	UHi	150	250	350	500	800	1000		
	Hi	150	250	350	500	800	1000		
	Lo	120	190	240	440	630	700		
External static pressure	UHi	80	105	140	120	140	105		
	Hi	70	95	60	60	110	80		
	Lo	25	45	45	35	55	75		
Net weight	kg	25	29	49	57	71	83		
Remote control		Included							
Air filter	Supply air	Protection for element (Washable) PS400							
	Exhaust air								



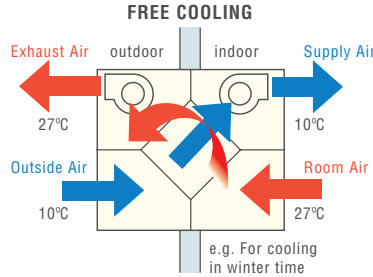
# Heat recovery unit

# MHISAF

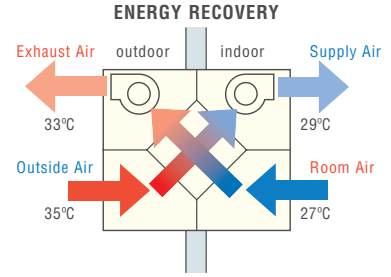
Structure (MHISAF800E7)



Principle of operation (simple ventilation)

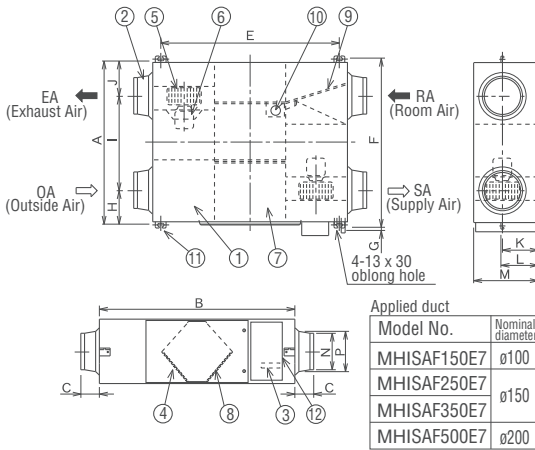


Principle of operation (heat exchanging)

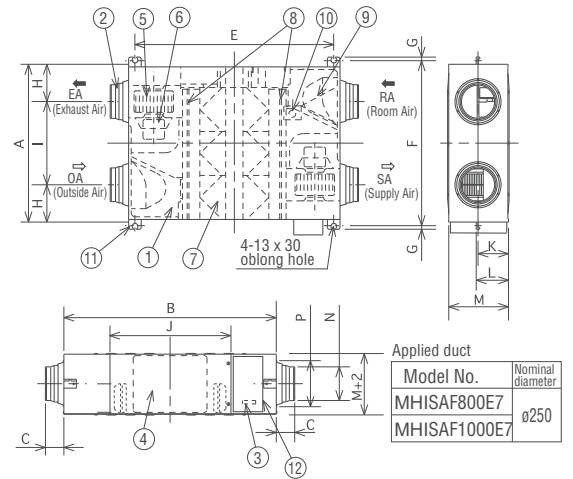


## Dimensions

All measurements in mm



MHISAF800E7, MHISAF1000E7



### Dimension table

Model	A	B	C	E	F	G	H	I	J	K	L	M	N	P	Unit:mm	
MHISAF150E7	467	970	49	810	525	19	82	303	82	135	159	270	ø98	ø110		
MHISAF250E7	599	882	95	655			142	315	142					ø144	ø164	
MHISAF350E7	804	1050		978	860		112	580	112		159	182	317	ø194	ø210	
MHISAF500E7	904	1090	70	1018	960		132	640	132							

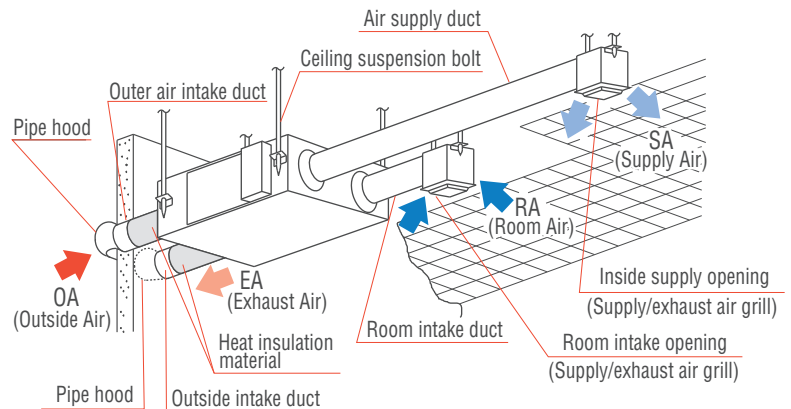
### Dimension table

Model	A	B	C	E	F	G	H	I	J	K	L	M	N	P	Unit:mm
MHISAF800E7	884	1322	85	1250	940	19	228	428	612	194	218	388	ø242	ø258	
MHISAF1000E7	1134				1190			678							

NO.	Name	Qt'y
①	Frame	1
②	Adaptor	4
③	Terminal board	1
④	Inspection Cover	1
⑤	Fan	2 **
⑥	Motor	2 **
⑦	Heat Exchange Element	1
	MHISAF150E7	1
	MHISAF250E7	2
	MHISAF350E7	2
	MHISAF500E7	3
⑧	Filter	2
⑨	Damper	1
⑩	Damper Motor	1
⑪	Suspension fitting	4
⑫	Electrical components box	1

\*\*Model MHISAF350E7, MHISAF500E7 have different fan and motor locations.

### Installation reference



Note: An inspection port is needed for cleaning the heat exchanger and filter 1 or 2 times a year.

sales@lindab.co.uk



W00-04-10

We reserve the right to make changes without prior notice

2024-03-21

