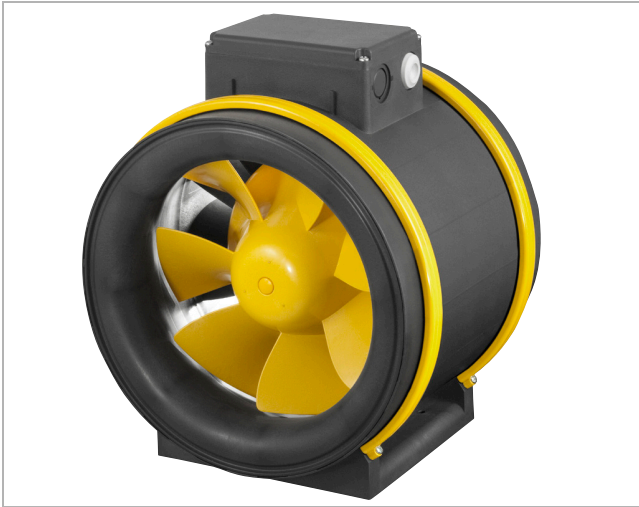




Lindab Etamaster

LEM



Description

The ETAMASTER diagonal fans have three-dimensionally shaped rotor and stator blades. The result is a reduced loss in the energy transfer in the rotor.

The downstream three-dimensionally curved stator causes a large part of the dynamic energy from the impeller output to be converted to usable static pressure.

All the efficiency requirements of the Ecodesign Directives which are known today, are clearly exceeded with ETAMASTER.

ETAMASTER can be integrated directly into the ductwork. Since the housing is only slightly larger than the pipe system, there are almost no additional space requirements.

The standard mounting bracket facilitates assembly by turning the terminal box into any position.

Dimensions

Size	Max. air flow
LEM 150L E2M - 01	600 m ³ /h
LEM 200 E2M - 01	1220 m ³ /h
LEM 250 E2M - 01	1625 m ³ /h
LEM 315 E2M - 01	3180 m ³ /h
LEM 400 E4M - 01	3300 m ³ /h

Technical Data

- Highest aerodynamic efficiency through computer optimized, three-dimensionally shaped impeller and guide vanes
- With 3-step AC motors
- The motor is protected in the hub area and does not influence the airflow
- Casing made out of corrosion resistant plastic