



In-Line Filter Cassette

ILFC

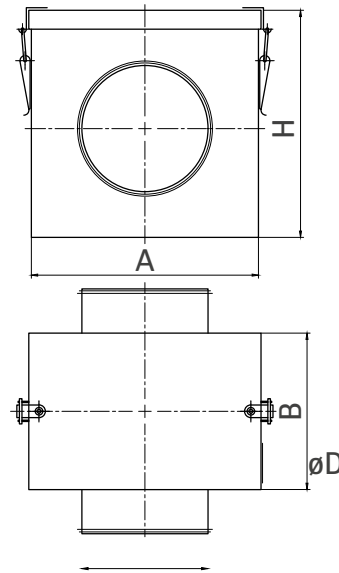



Duct filters are designed to be installed in round duct systems of standard diameters (100 – 500 mm).

Casing is made of galvanized steel, connectors are equipped with rubber gaskets and the filter cartridge (EU5 class) is secured with galvanized steel mesh.

The filter is used for initial filtration of air intake.

Dimensions



øD [mm]	A / H [mm]	B [mm]	
100	180	120	24 P4
125	180	120	24 P4
150	210	120	24 P2
160	210	120	24 P2
200	250	120	24 P2
250	300	120	10 P2
300	360	120	8 P2
315	370	120	8 P2

Technical Data

