



# Matching Flange

# EL061B

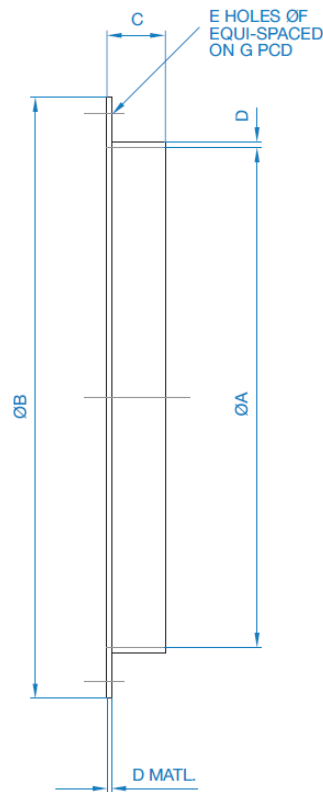


## Dimensions

Fan Dia	B	C	D	E	F	G	Weight kg
250	325	30	1.5	8	10	229	0.5
315	375	30	1.5	8	10	355	0.7
350	425	40	1.5	8	10	395	1.2
355	425	40	1.5	8	10	395	0.9
400	475	40	1.5	8	12	450	1.2
450	530	40	1.5	8	12	500	2.2
500	585	45	2.0	12	12	560	2.6
560	645	45	2.0	12	12	620	3.0
630	715	45	2.0	12	12	690	3.5
710	795	45	2.0	16	12	770	3.7
800	885	50	2.5	16	12	860	5.0
900	1000	50	2.5	16	15	970	5.5
1000	1110	50	2.5	16	15	1070	6.5

## Overview

- Fits directly to fan case flange
- Provides easy connection to flexible connector or ducting
- Hot dip galvanised steel



sales@lindab.co.uk



W00-04-12

We reserve the right to make changes without prior notice

2023-06-29